

LTI Resource Search for Educators

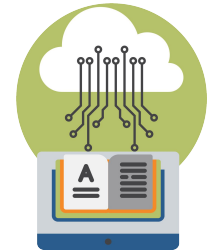
**Query
Repositories**



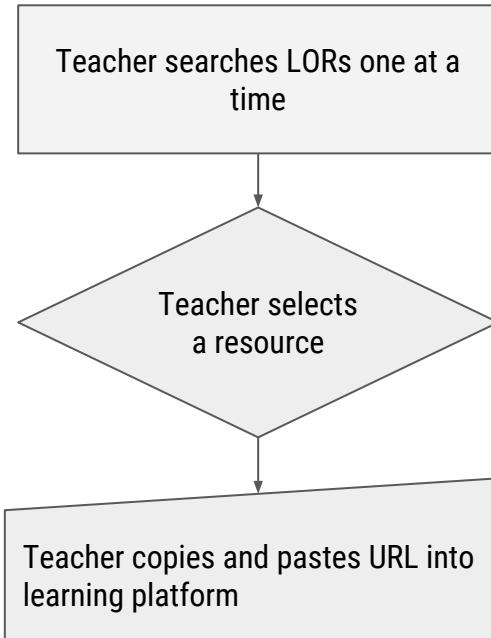
Defined Metadata



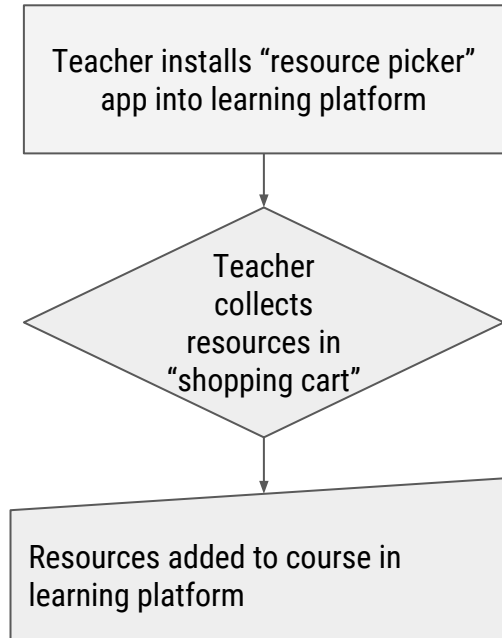
**Easy to Implement
Web Service**



How Do Learning Platforms and Tools Integrate Resources Today?



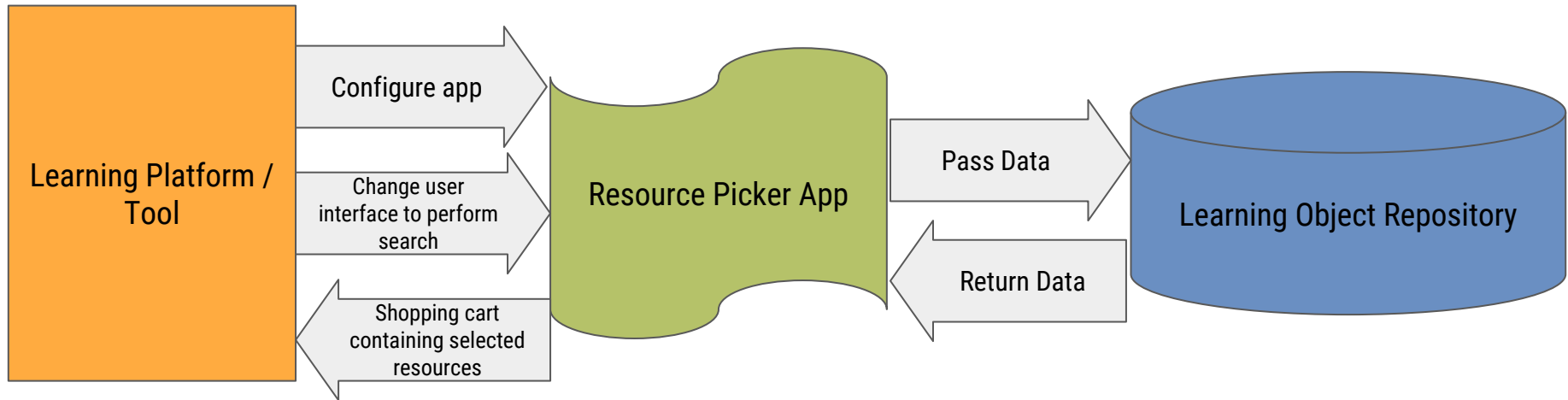
OR



Which creates these problems:

- Inconsistent User Interfaces
- Learning Platform should be the "teacher cockpit"
- Repositories have unnecessary development burden for "resource picker" apps
- Apps add additional credentialing requirements which aren't needed in when web services are used

Many Opportunities for Things To Fail



Resource Search Solves These Issues

- Using modern web services to search resource catalogs and repositories
- Allows the learning platform “own” the teacher experience or user interface
- Provides a solution for searching multiple repositories
- Implementations by providers and platforms require only ONE search solution

What is Resource Search v1.0?

- Enables Learning Platforms to provide the **right resources** for the **right students** at the **right time**
- Ability to **query** resource libraries for appropriate resources and transparent launching of those resources
- Provides an organized and defined set of **metadata** for each resource



Are your suppliers IMS Certified?



Are your suppliers IMS Certified?

“The reality is, we won’t seek to be certified unless our customers require it. Then we will.”

-Learning Platform Executive



Insist on Certified LTI Resource Search Products

Reliability *Guaranteed backing of expert IMS technical staff*

Usability *Integrations that meet the highest industry standards*

Choice *Virtual catalog of certified-compatible teaching and learning tools and content*



Resource Search Links

- [Resource Search Technical Activity Page](#)
- K-12 Statement of Intent to Adopt IMS Global Learning Consortium Standards in a Timely Manner
- Resource Search Checklist and RFP Language

LTI Resource Search for Educators

**Query
Repositories**



Defined Metadata



**Easy to Implement
Web Service**

