

Learn & Work

▪ ECOSYSTEM LIBRARY ▪



# Opportunities with the Learn & Work Ecosystem Library

1EdTech Webinar | August 13, 2024

Kelly Hoyland, Director  
Higher Education Programs  
1EdTech, [khoyland@1edtech.org](mailto:khoyland@1edtech.org)

Holly Zanville, Research Professor, George  
Washington University | Founder/Lead, Learn &  
Work Ecosystem Library

Matthew Valdez, Librarian  
Learn & Work Ecosystem Library  
[librarian@learnworkecosystemlibrary.com](mailto:librarian@learnworkecosystemlibrary.com)

## How Is Searching Changing?

- ✓ To Google or Not ... That is the Question
- ✓ Click from website to website? (problems with some websites)
- ✓ Getting on board with AI bots (pros / cons)
- ✓ Shortcuts like the Library or best to use “all of the above”?

## Topics

- Poll
- Library Overview
- Topics of interest to query Library in live search
- Discussion: How and where do you acquire information now, and how helpful are their resources for meeting your information needs?

## Poll

### Are you familiar with the Learn & Work Ecosystem Library (visited at least once in last 6 months)?

- Yes
- No
- Yes, but it's been longer than 6 months since my visit

### What are your top information sources for news and developments in learn-and-work ecosystem?

- Industry or trade newsletters?
- LinkedIn or other social media?
- RSS Feeds? (aggregator feeds for news and events from your favorite websites, blogs, podcasts)
- Internet search engines?
- Individual website searches?
- Google news alerts or comparable service
- None of these

### Which topics (if any) would you be interested in checking out in a search at the Library?

- Identify opportunities for collaboration with other organizations, projects
- Find frameworks/models/playbooks/etc. to guide work
- Contribute new content for the library collection
- Identify trends and understand the state of the ecosystem
- Identify gaps in research or implementation for future efforts
- Don't know or None

Learn & Work

▪ ECOSYSTEM LIBRARY ▪

When you go to the Library,  
you'll see the main page . . .  
You can pick your language of choice



## Connecting Education & Work

Informing the evolving learn-and-work ecosystem



Use Our AI Library Assistant

[Index \(989\) →](#)

[Glossary \(295\) →](#)

[Archive \(4\) →](#)

[Key Components \(12\) →](#)



### Topics (94)

Important subjects or themes which define and describe the learn-and-work ecosystem

[View All →](#)



### Initiatives (309)

Key projects working to improve the learn-and-work ecosystem

[View All →](#)



### Organizations (275)

Alliances and intermediary organizations working to improve the learn-and-work ecosystem; some focus in 1-2 areas, others on many areas of the ecosystem

[View All →](#)

[INDEX](#)[GLOSSARY](#)



## Conectando educación y trabajo

Informar el ecosistema de aprendizaje y trabajo en evolución



Utilice Nuestro Asistente De Biblioteca AI

[Índice \( 1077 \) →](#)

[Glosario \( 341 \) →](#)

[Archivo \(4\) →](#)

[Componentes Clave  
\(12\) →](#)



### Temas ( 95 )

Temas o temas importantes que definen y describen el ecosistema de aprendizaje y trabajo

[Ver Todo →](#)



### Iniciativas ( 334 )

Proyectos clave que trabajan para mejorar el ecosistema de aprendizaje y trabajo

[Ver Todo →](#)



### Organizaciones ( 291 )

Alianzas y organizaciones intermediarias que trabajan para mejorar el ecosistema de aprendizaje y trabajo; algunos se centran en 1 o 2 áreas, otros en muchas áreas del ecosistema

[Ver Todo →](#)

[Buscar En La Colección →](#)

[ÍNDICE](#)

[GLOSARIO](#)





## 교육과 업무의 연결

진화하는 학습 및 업무 생태계에 대한 정보 제공

도서관 검색



AI 도서관 도우미를 사용해 보세요

색인 (1077) →

용어집 (341) →

아카이브 →  
(4)

주요 구성 요소 (12) →



### 주제 (95)

학습 및 업무 생태계를 정의하고 설명하는 중요한 주제 또는 테마

모두보기 →



### 이니셔티브 (334)

학습 및 업무 생태계 개선을 위한 주요 프로젝트

모두보기 →



### 조직 (291)

학습 및 업무 생태계를 개선하기 위해 노력하는 동맹 및 중개 조직 일부는 1-2개 영역에 초점을 맞추고 다른 일부는 생태계의 여러 영역에 중점을 둡니다.

모두보기 →





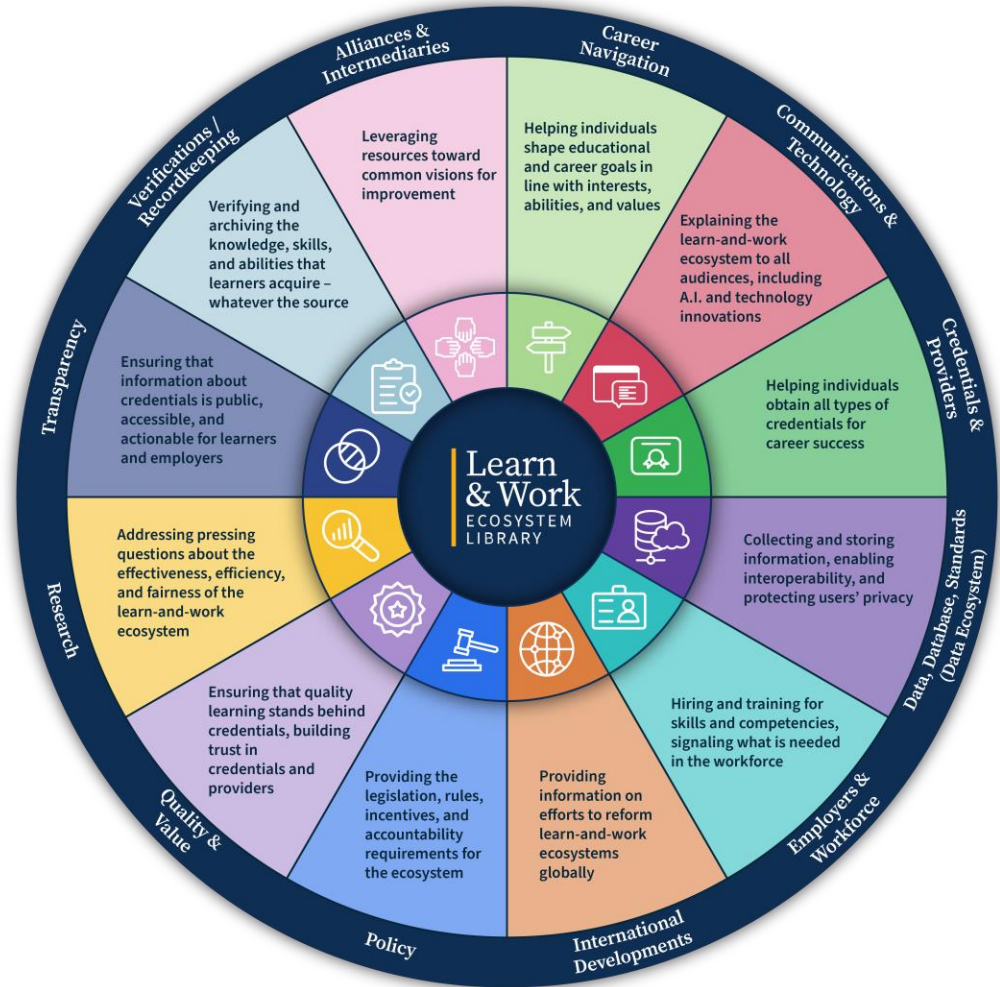
Learn & Work

▪ ECOSYSTEM LIBRARY ▪

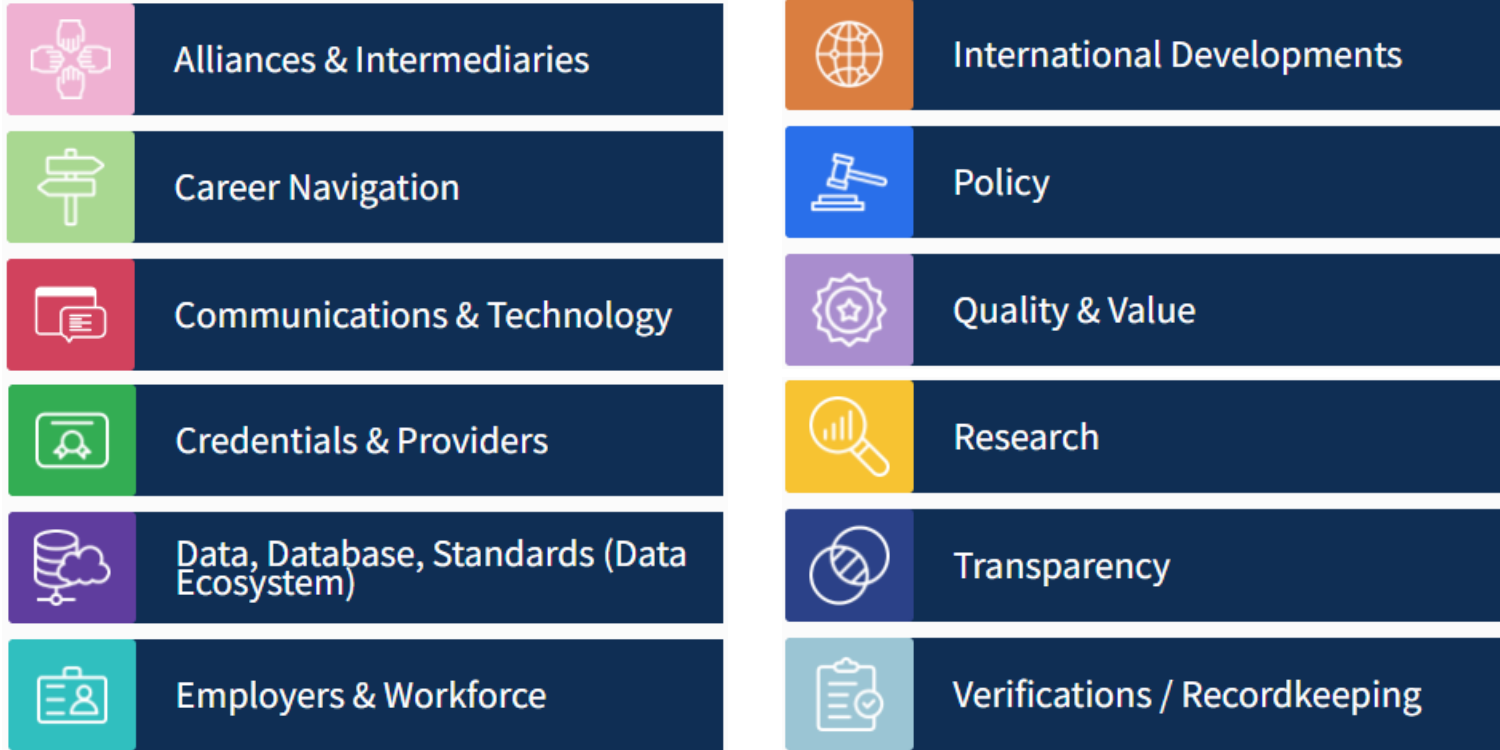
You'll see the organization of content,  
by 12 key components of  
learn-and-work ecosystem

# 12 Key Components of Learn-and-Work Ecosystem

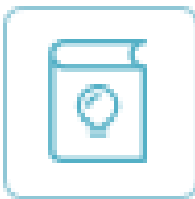
- All components must be connected and coordinated so that **INDIVIDUALS** can move seamlessly through marketplace using a variety of credentials to communicate the skills and knowledge acquired in multiple settings (school, work, service, self-study)
- **SCHOOLS** can count learning obtained outside of academic settings toward a degree or other credential
- **EMPLOYERS** have more detailed and externally-validated information for hiring, reskilling, and upskilling workers
- **PUBLIC** is informed about the learn-and-work ecosystem



# 12 Key Components of Learn-and-Work Ecosystem

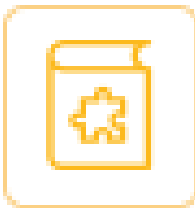


# Types of Content



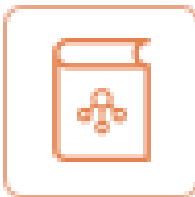
## Topics

Important subjects or themes which define and describe the ecosystem



## Initiatives

Key projects working to improve components of the learn-and-work ecosystem



## Organizations

Alliances / intermediaries working to improve component of the learn-and-work ecosystem

## Index

Searchable A-Z listing of all 1000+ Library artifacts

## Glossary

Key vocabulary terms and concepts are defined and alternate terms are identified

**INDEX****GLOSSARY**

## Key Features

- Special Project User Case Project
  - Newsroom for articles, blogs, other
  - Curation by librarian
  - Links to external websites for all key content
  - Timestamping to indicate recency of content
  - Digital accessibility compliance for disabled users
  - Content available in multiple languages
- Search options: key word, filter by stakeholders and types of content, AI Library assistant chatbot for natural language queries and synthesis
  - About section: describes the why, how, and what around the library, staff team, national advisory board, commitment to open access (creative commons license), wiki model that invites community participation

Going Live ...

Learn & Work

▪ ECOSYSTEM LIBRARY ▪

Growth of content  
since Library launch  
12/1/2022

# Growth in Content

	<u>12/1/22 Launch</u>	<u>08/12/24</u>
Key Components	12	12
Subcomponent Topics	71	95
Glossary Terms	--	350
Initiatives (Projects)	88	342
Organizations	118	292
Relational Maps (in development)		13
	<hr/> 286	<hr/> 1,104
New content/wiki request forms		33
Correction requests		23



Learn & Work

▪ ECOSYSTEM LIBRARY ▪

Growth of users  
since Library launch  
12/1/2022

# Growth in Users

12/02/22      668 distinct tracked users

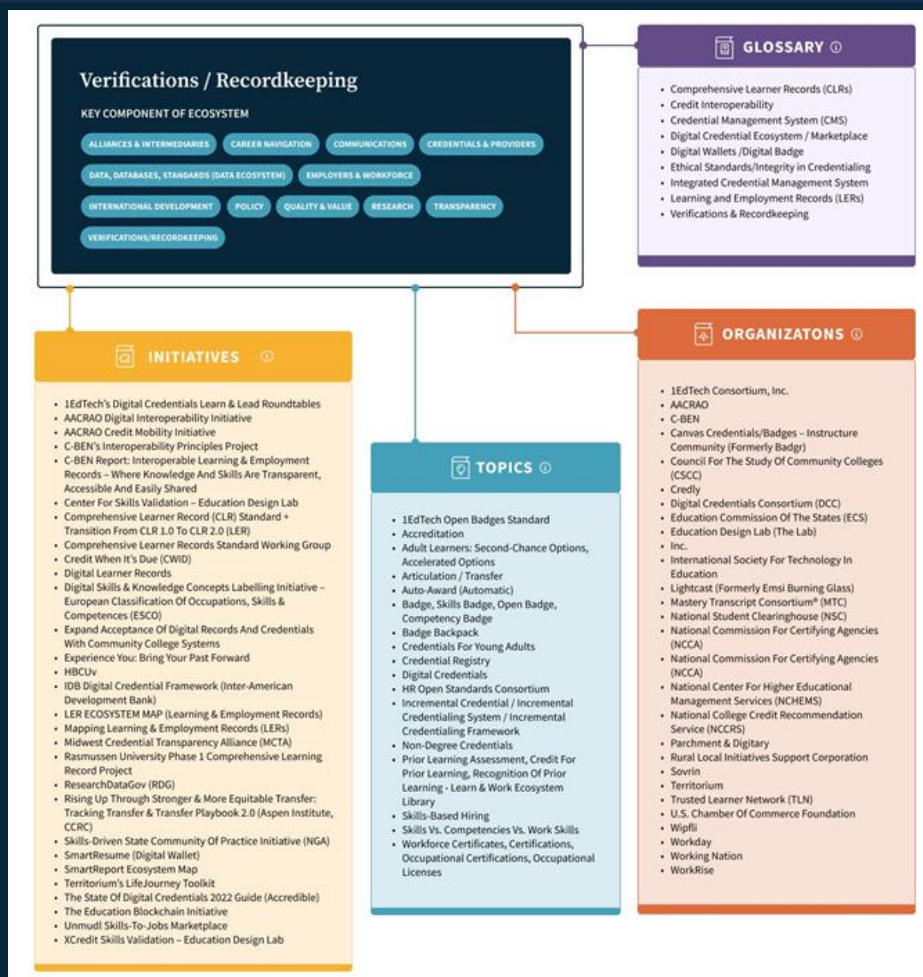
---

08/12/24      27,825 distinct tracked users  
3,700 repeat visitors  
39,581 sessions  
68,055 page views  
666 downloads

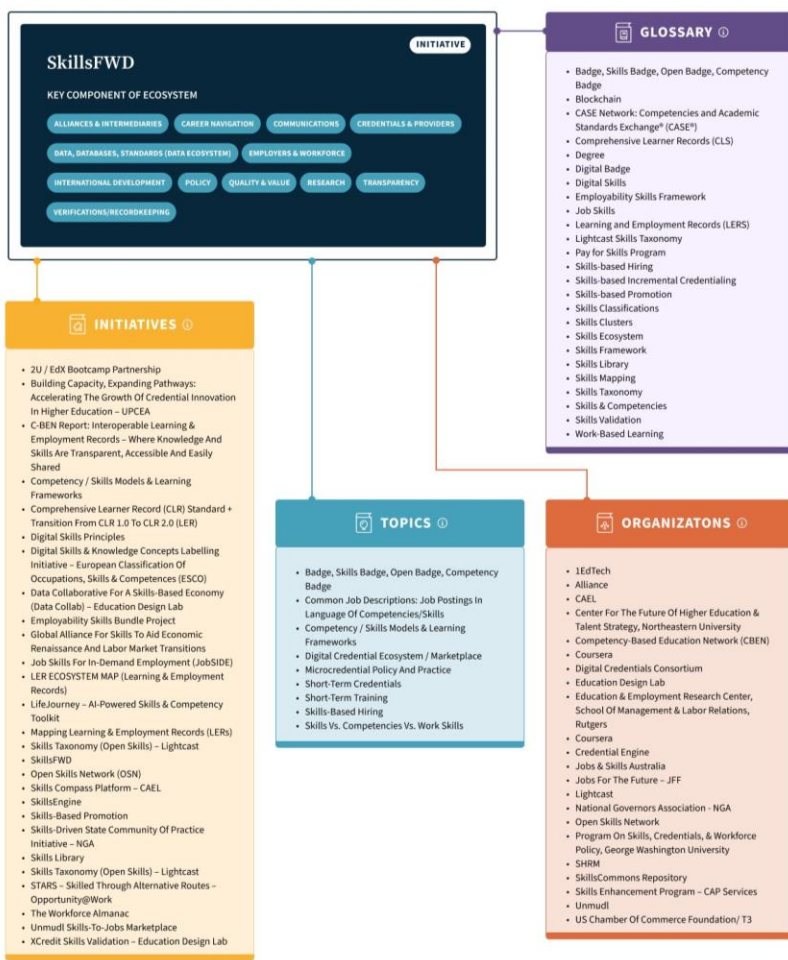
We're providing **relational maps** to depict how  
Initiatives **relate to** Organizations **relate to**  
Glossary Terms **relate to** Topics **relate to** the  
Key Components of the ecosystem

# Prototype Relational Maps

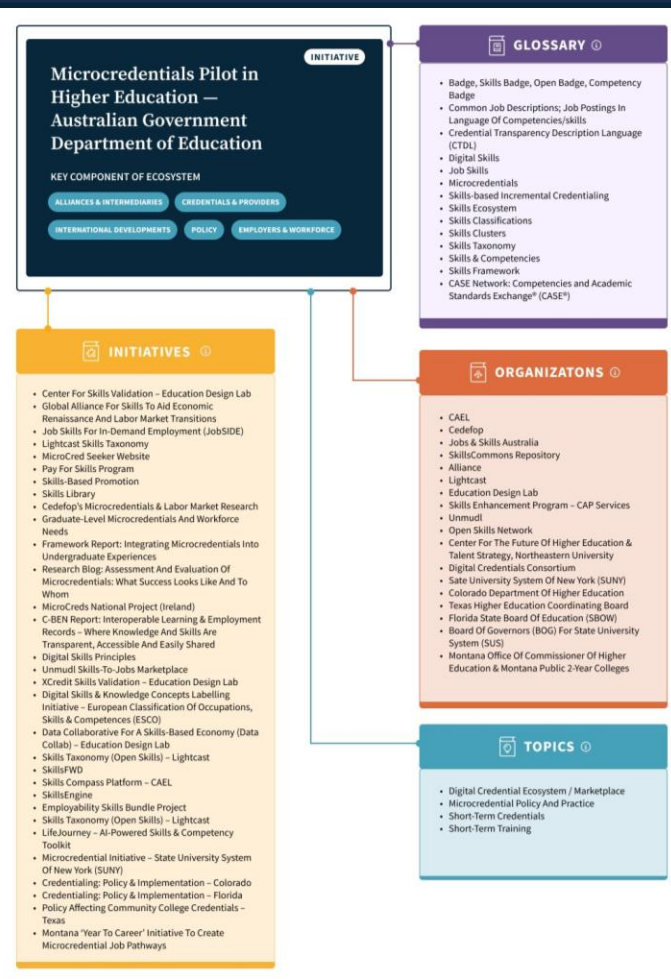
- Show connections within the ecosystem
- Contain active links to take users to artefacts within library collection
- Updated as new related content is added to the library collection
- Leverage human judgment and A.I. to create connections beyond basic keyword matches



# Second Example



# Third Example



# 3 Recent Developments



LEARN & WORK ECOSYSTEM LIBRARY

Research Center

- Library Lens
- Online Newspaper
- Professional Development Hub
- Special Projects
- Consultation with Librarian
- Research Shows

Research Center



Special Projects



AI Library Assistant



## RESEARCH CENTER



### Library Lens

The Library collection, constantly evolving as new content is added and new connections are generated, is itself an information database to be analyzed. Through the Library Lens, our briefs and reports explore trends within the ecosystem and insights revealed by analysis of website use.



### Professional Development Hub

A space dedicated to professional development resources produced by the Library, including webinars and a newsletter.



### Special Projects

A space dedicated to collaborative projects designed to support the use and improvement of the Library. These may include: exploring use of Library as an open educational resource or instructional tool, user case studies, and assessment of the content's currency and adequacy.



### Consultation with Librarian

If you're having trouble finding the information you seek or are unsure whether the Library addresses your specific research question, a librarian is available to help. Questions submitted by email or contact form will initiate an asynchronous email consultation and present options for further collaboration.



### Researcher Showcase

A space for researchers to present their projects and findings related to the Learn-and-Work Ecosystem. Reports and findings that are coded to the Library Classifications (cross-referenced) are found here.



### Online Newspaper

Through a partnership between the Learn & Work Ecosystem Library and The EvoLLLution, Library users have access to thousands of relevant articles. With over 60,000 monthly visitors, the Toronto-based EvoLLLution (a project of Open Campus) is a go-to source for opinions and information. It works with over 2,500 contributors, including college deans, state system presidents, working adults, hiring managers, government officials, and researchers. Since 2012, The EvoLLLution has recognized the importance of diverse viewpoints and provided a unique platform for contributors to share their stories, opinions, and experiences.



◉ Research Center

## Special Projects



**USER GROUP  
SPECIAL  
PROJECT: LER  
ACCELERATOR**

06/10/2024

[Read More »](#)



**USER GROUP  
SPECIAL  
PROJECT:  
JOURNALISTS'  
GUIDE TO USING  
THE LEARN &  
WORK  
ECOSYSTEM  
LIBRARY**

05/31/2024

[Read More »](#)



**USER GROUP  
SPECIAL  
PROJECT: LEARN  
& WORK  
ECOSYSTEM  
LIBRARY AS  
INSTRUCTIONAL  
TOOL**

05/14/2024

[Read More »](#)



**USER GROUP  
SPECIAL  
PROJECT:  
CREDENTIAL  
FUTURES  
CONSORTIUM  
(CFC)**

05/05/2024

[Read More »](#)



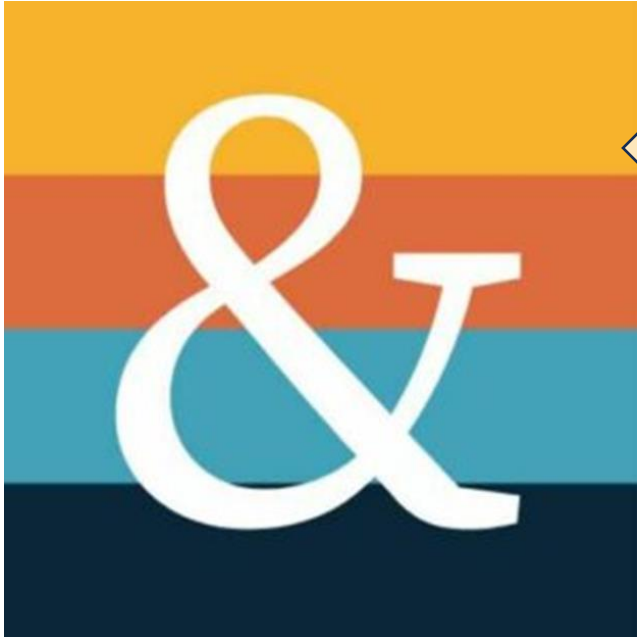
**REQUEST FOR  
PARTICIPATION  
(RFP):  
COMMUNITY OF  
LEARNERS/LIBRARY  
PARTNERSHIP**

03/01/2024

[Read More »](#)



# Ampersand Favicon and AI Library Assistant



The ampersand highlights the interconnected nature of ecosystem components.

The AI bot is powered by ChatGPT and provides conversational synthesis of Library content.



# Major Milestones / Lessons Learned

- Challenges of finding easily accessible and accurate information at websites – websites generally not connected, some have pay walls, some not kept up when funding ends
- There are more competing information resources / libraries
- Co-pilot Bots are coming on strong – are they / will they be reliable?
- Challenges of updating library content
- Overwhelming – there is a lot of mostly discrete information – need for synthesis
- AI changes how we find and interrelate with information – need navigation pathways

# Learn & Work

▪ ECOSYSTEM LIBRARY ▪

<https://learnworkecosystemlibrary.com/>

Holly Zanville - [hollyzanville@gmail.com](mailto:hollyzanville@gmail.com)

Matthew Valdez - [librarian@learnworkecosystemlibrary.com](mailto:librarian@learnworkecosystemlibrary.com)

# Discussion

